

NSI ELECTRONIC
WHIRLPOOL-PROFESSIONAL SORTIMENT 2018-19

THE NEW W/AP ERA

World of
Advanced
Products

SERVICE DENMARK

NSI Electronic ordreafdeling:

Telefon: +45 87 45 46 00

Mail: info@nsi-el.dk

Nordic Sales & Marketing:

Johan Lundvall

Johan_Lundvall@whirlpool.com

+46 8 685 05 21

Service Call Center:

Telefon: +45 44 88 02 22

Mail: kkdk@whirlpool.com

For produkter med fuld service kontaktes Call Center i tilfælde af service!

For produkter med reservedelsgaranti kontaktes servicepartner direkte.

Servicepartnere i Danmark:

Din Hvidevareservice

Region: København/Nordsjælland

Phone: 43 62 66 33

L.F servicecentre

Region: Lolland Falster

Phone: 54 85 70 66

DK Hvidevareservice

Region: FYN/trekants område i Jylland

Phone: 65 92 60 65

N.A Hvidevareservice

Region: Vest/Sydsjælland

Phone: 59 27 34 49

CJ hvidevareservice Randers

Region: Midt & Øst Jylland

Phone: 86 47 77 77

k. Nyborg Hansen

Region: Bornholm

Phone: 56 49 20 95

C.J. Service Ålborg

Region: Nord Jylland

Phone: 98 18 21 00

El systems

Region: Ærø-købing

Phone: 28 18 10 28

Hvidevarecenter vest

Region: Syd Jylland

Phone: 75 26 91 90



/ LAUNDRY

/ COMMERCIAL WASHING

/ SUPREME CARE PRO

An iconic, modern and highly recognizable design providing a touch & feel of a true professional product

- / Premium professional look
- / High quality materials
- / Soft touch input area
- / Chromed details
- / Big capacity look



REASON TO BELIEVE

- / Supreme Care platform
- / **Reinforced** body structure
- / Silicone Bellow (Oil & Grease resistant)
- / **Special** dampeners
- / **Professional** oriented programs
- / Whirlpool **ZEN** motor
- / Tested for **5000 cycles**
- / In conformity with **Machinery Directive** 2006/42/ES

WARRANTY

- / **2 Years full Warranty** for Commercial use
(Warranty includes parts & labour)

TARGET CUSTOMERS

- / Hairdressers, Physiotherapist, Fitness and Massage studios, Conference facilities, Camping facilities. Sport centers etc
- / Snack bars, Pubs, Kiosks Small restaurants, Bakeries
- / Car services, Repair shops, Engineering, Service stations etc
- / Facility managements, Cleaning companies, Office kitchens, Daycare and Kindergarten, School and Education institutes etc

PARTNER VALUE

- / Offer a perfectly suited product for commercial usage, **increase trust** as a B2B partner.
- / **High profitability** vs Domestic products



**REINFORCED
STRUCTURE**



**2 YEARS
WARRANTY**



**5000
CYCLES**

/ COMMERCIAL WASHING

/ SUPREME CARE PRO – 11 KG



NEW PROFESSIONAL CYCLES

A cluster of new cycles specially studied to satisfy the professional needs. Hygiene & Anti-Allergies program for a perfectly clean environment.



6TH SENSE TECHNOLOGY

The 6TH Sense intelligent sensors adapt resources according to the weight and type of load, offering savings of up to 50%* on energy, water and time.



ZEN TECHNOLOGY

Thanks to the Direct Drive Motor and the special anti-vibration design of the lateral panels, it ensures the lowest sound level on the market.**

* Comparison between a maximum load and 1 Kg load in a washer with the 6TH Sense function and the Cotton 60° C program.

** Lowest sound levels on the market in both washing and spinning up to 1.400 rpm.

ASTHETICS & MAIN PARAMETERS

12NC	859991538480
COMMERCIAL CODE	AWG1112S/PRO
CAPACITY (KG)	11 KG
MAX SPIN SPEED (RPM)	1200 RPM
CONTROL PANEL	DIGIT
DRUM VOLUME (L)	77 L
KIND OF MOTOR	DIRECT DRIVE (ZEN)
NOISE INSULATION	BEST ZEN INSULATION
TYPE OF WATER PROTECTION SYSTEM	FULL AQUASTOP: TRAY + 1 ELTEK

CYCLES & OPTIONS

NUMBER OF CYCLES	10
NUMBER OF OPTIONS	16

DIMENSIONS & WEIGHTS

NET WEIGHT (KG)	85 KG
DIMENSIONS HxWxD (CM)	85 x 59,5 x 70 CM

TECHNICAL DATA

VOLTAGE (V)	220-230 V
ENERGY CONSUMPTION ANNUAL (kWh/YEAR)	140 KWH
WATER CONSUMPTION ANNUAL (L/YEAR)	11 900 L
NOISE LEVEL SPINNING (dBA)	70 DBA
NOISE LEVEL WASHING (dBA)	48 DBA
DRUM MATERIAL	STAINLESS STEEL



**REINFORCED
STRUCTURE**



**2 YEARS
WARRANTY**



**5000
CYCLES**

/ COMMERCIAL WASHING

/ SUPREME CARE PRO – 9 KG



PROFESSIONAL CYCLES

A cluster of new cycles specially studied to satisfy the professional needs. Mops & Towels additional to Working clothes.



6TH SENSE TECHNOLOGY

The 6TH Sense intelligent sensors adapt resources according to the weight and type of load, offering savings of up to 50%* on energy, water and time.



ZEN TECHNOLOGY

Thanks to the Direct Drive Motor and the special anti-vibration design of the lateral panels, it ensures the lowest sound level on the market.**

* Comparison between a maximum load and 1 Kg load in a washer with the 6TH Sense function and the Cotton 60° C program.

** Lowest sound levels on the market in both washing and spinning up to 1.400 rpm.



ASTHETICS & MAIN PARAMETERS

12NC	859991545640
COMMERCIAL CODE	AWG912 S/PRO
CAPACITY (KG)	9 KG
MAX SPIN SPEED (RPM)	1200 RPM
CONTROL PANEL	DIGIT
DRUM VOLUME (L)	64 L
KIND OF MOTOR	DIRECT DRIVE (ZEN)
NOISE INSULATION	BEST ZEN INSULATION
TYPE OF WATER PROTECTION SYSTEM	FULL AQUASTOP: TRAY + 1 ELTEK

CYCLES & OPTIONS

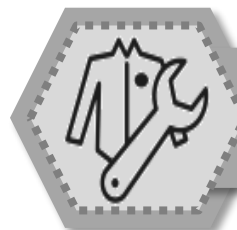
NUMBER OF CYCLES	10
NUMBER OF OPTIONS	16

DIMENSIONS & WEIGHTS

NET WEIGHT (KG)	85 KG
DIMENSIONS HxWxD (CM)	85 x 59,5 x 64 CM

TECHNICAL DATA

VOLTAGE (V)	220-230 V
ENERGY CONSUMPTION ANNUAL (kWh/YEAR)	191 KWH
WATER CONSUMPTION ANNUAL (L/YEAR)	11 500 L
NOISE LEVEL SPINNING (dBA)	69 DBA
NOISE LEVEL WASHING (dBA)	49 DBA
DRUM MATERIAL	STAINLESS STEEL



**REINFORCED
STRUCTURE**



**2 YEARS
WARRANTY**



**5000
CYCLES**

/ COMMERCIAL WASHING

/ SUPREME CARE PRO – 8 KG



NEW PROFESSIONAL CYCLES

A cluster of new cycles specially studied to satisfy the professional needs. Mops & Towels additional to Working clothes.



6TH SENSE TECHNOLOGY

The 6TH Sense intelligent sensors adapt resources according to the weight and type of load, offering savings of up to 50%* on energy, water and time.



ZEN TECHNOLOGY

Thanks to the Direct Drive Motor and the special anti-vibration design of the lateral panels, it ensures the lowest sound level on the market.**

* Comparison between a maximum load and 1 Kg load in a washer with the 6TH Sense function and the Cotton 60° C program.

** Lowest sound levels on the market in both washing and spinning up to 1.400 rpm.



ASTHETICS & MAIN PARAMETERS

12NC	859991545430
COMMERCIAL CODE	AWG812 S/PRO
CAPACITY (KG)	8 KG
MAX SPIN SPEED (RPM)	1200 RPM
CONTROL PANEL	DIGIT
DRUM VOLUME (L)	64 L
KIND OF MOTOR	DIRECT DRIVE (ZEN)
NOISE INSULATION	BEST ZEN INSULATION
TYPE OF WATER PROTECTION SYSTEM	FULL AQUASTOP: TRAY + 1 ELTEK

CYCLES & OPTIONS

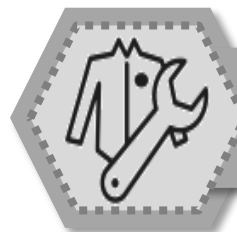
NUMBER OF CYCLES	10
NUMBER OF OPTIONS	16

DIMENSIONS & WEIGHTS

NET WEIGHT (KG)	85 KG
DIMENSIONS HxWxD (CM)	85 x 59,5 x 64 CM

TECHNICAL DATA

VOLTAGE (V)	220-230 V
ENERGY CONSUMPTION ANNUAL (kWh/YEAR)	174 KWH
WATER CONSUMPTION ANNUAL (L/YEAR)	10 800 L
NOISE LEVEL SPINNING (dBA)	69 DBA
NOISE LEVEL WASHING (dBA)	49 DBA
DRUM MATERIAL	STAINLESS STEEL



**REINFORCED
STRUCTURE**



**2 YEARS
WARRANTY**



**5000
CYCLES**

/ COMMERCIAL DRYING

/ SUPREME CARE PRO

An iconic, modern and highly recognizable design providing a touch & feel of a true professional product

- / Premium professional look
- / High quality materials
- / Soft touch input area
- / Chromed details
- / Big capacity look

REASON TO BELIEVE

- / Supreme Care platform
- / **Reinforced** air channel
- / **Special** belt
- / **Additional** condenser filter
- / Tested for **5000 cycles**
- / In conformity with **Machinery Directive** 2006/42/ES

WARRANTY

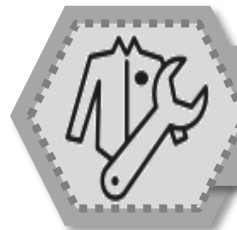
- / **2 Years full Warranty** for Commercial use
(Warranty includes parts & labour)

TARGET CUSTOMERS

- / Hairdressers, Physiotherapist, Fitness and Massage studios, Conference facilities, Camping facilities. Sport centers etc
- / Snack bars, Pubs, Kiosks Small restaurants, Bakeries
- / Car services, Repair shops, Engineering, Service stations etc
- / Facility managements, Cleaning companies, Office kitchens, Daycare and Kindergarten, School and Education institutes etc

PARTNER VALUE

- / Offer a perfectly suited product for commercial usage, **increase trust** as a B2B partner.
- / **High profitability** vs Domestic products



**REINFORCED
STRUCTURE**



**2 YEARS
WARRANTY**



**5000
CYCLES**

/ COMMERCIAL DRYING

/ SUPREME CARE PRO – 10 KG



SPECIAL CYCLES AND OPTIONS

A combination of multilevel options and cycles offering an ideal solution for professional needs.



6TH SENSE TECHNOLOGY

The 6TH Sense Infinite Care Technology monitors the temperature and humidity inside the drum and adjusts them, according to the program selected thanks to the file setting and the algorithm. The result is that energy, time and drying performance are optimized automatically.



3DRY TECHNOLOGY

This technology provides a multidimensional airflow system, with warm air delicately projected from the lifters and from various points inside the drum.



ASTHETICS & MAIN PARAMETERS

12NC	859991540410
COMMERCIAL CODE	AWZ10CDS/PRO
CAPACITY (KG)	10 KG
CONTROL PANEL	DIGIT
DRUM VOLUME (L)	121 L
TECHNOLOGY	CONDENSER
NOISE LEVEL (dBA)	68 DBA
STEAM	YES

CYCLES & OPTIONS

NUMBER OF CYCLES	10
NUMBER OF OPTIONS	12

DIMENSIONS & WEIGHTS

NET WEIGHT (KG)	40 KG
DIMENSIONS HxWxD (CM)	87,5 x 59,5 x 67,5 CM

TECHNICAL DATA

VOLTAGE (V)	230 V
AVERAGE DRYING TIME COTTON CUPBOARD DRY 50% MOISTURE (1400RPM SPINNING)	165 MIN
AVERAGE DRYING TIME SYNTHETICS CUPBOARD DRY 50% MOISTURE (1000RPM SPIN SPEED)	81 MIN
ENERGY CONSUMPTION kWh COTTON CUPBOARD DRY 50% MOISTURE (1400RPM SPINNING)	5,18 KWH
ENERGY CONSUMPTION kWh COTTON IRON DRY 50% MOISTURE (1400RPM SPINNING)	4,53 KWH
DRUM MATERIAL	HYBRID STAINLESS STEEL



**REINFORCED
STRUCTURE**



**2 YEARS
WARRANTY**



**5000
CYCLES**

/ COMMERCIAL DRYING

/ SUPREME CARE PRO – 9 KG



SPECIAL CYCLES AND OPTIONS

A combination of multilevel options and cycles offering an ideal solution for professional needs.



6TH SENSE TECHNOLOGY

The 6TH Sense Infinite Care Technology monitors the temperature and humidity inside the drum and adjusts them, according to the program selected thanks to the file setting and the algorithm. The result is that energy, time and drying performance are optimized automatically.



3DRY TECHNOLOGY

This technology provides a multidimensional airflow system, with warm air delicately projected from the lifters and from various points inside the drum.



ASTHETICS & MAIN PARAMETERS

12NC	859991539350
COMMERCIAL CODE	AWZ9CD S/PRO
CAPACITY (KG)	9 KG
CONTROL PANEL	DIGIT
DRUM VOLUME (L)	121 L
TECHNOLOGY	CONDENSER
NOISE LEVEL (dBA)	68 DBA
STEAM	YES

CYCLES & OPTIONS

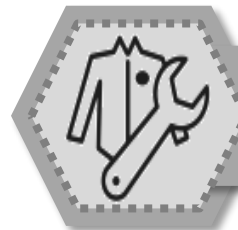
NUMBER OF CYCLES	10
NUMBER OF OPTIONS	12

DIMENSIONS & WEIGHTS

NET WEIGHT (KG)	40 KG
DIMENSIONS HxWxD (CM)	87,5 x 59,5 x 67,5 CM

TECHNICAL DATA

VOLTAGE (V)	230 V
AVERAGE DRYING TIME COTTON CUPBOARD DRY 50% MOISTURE (1400RPM SPINNING)	143 MIN
AVERAGE DRYING TIME SYNTHETICS CUPBOARD DRY 50% MOISTURE (1000RPM SPIN SPEED)	86MIN
ENERGY CONSUMPTION kWh COTTON CUPBOARD DRY 50% MOISTURE (1400RPM SPINNING)	4,87 KWH
ENERGY CONSUMPTION kWh COTTON IRON DRY 50% MOISTURE (1400RPM SPINNING)	4,27 KWH
DRUM MATERIAL	HYBRID STAINLESS STEEL



**REINFORCED
STRUCTURE**



**2 YEARS
WARRANTY**



**5000
CYCLES**

/ COMMERCIAL DRYING

/ SUPREME CARE PRO – 8 KG



SPECIAL CYCLES AND OPTIONS

A combination of multilevel options and cycles offering an ideal solution for professional needs.



6TH SENSE TECHNOLOGY

The 6TH Sense Infinite Care Technology monitors the temperature and humidity inside the drum and adjusts them, according to the program selected thanks to the file setting and the algorithm. The result is that energy, time and drying performance are optimized automatically.



3DRY TECHNOLOGY

This technology provides a multidimensional airflow system, with warm air delicately projected from the lifters and from various points inside the drum.



ASTHETICS & MAIN PARAMETERS

12NC	859991539360
COMMERCIAL CODE	AWZ 8CD S/PRO
CAPACITY (KG)	8 KG
CONTROL PANEL	DIGIT
DRUM VOLUME (L)	121 L
TECHNOLOGY	CONDENSER
NOISE LEVEL (dBA)	68 DBA
STEAM	YES

CYCLES & OPTIONS

NUMBER OF CYCLES	10
NUMBER OF OPTIONS	12

DIMENSIONS & WEIGHTS

NET WEIGHT (KG)	40 KG
DIMENSIONS HxWxD (CM)	87,5 x 59,5 x 67,5 CM

TECHNICAL DATA

VOLTAGE (V)	230 V
AVERAGE DRYING TIME COTTON CUPBOARD DRY 50% MOISTURE (1400RPM SPINNING)	127 MIN
AVERAGE DRYING TIME SYNTHETICS CUPBOARD DRY 50% MOISTURE (1000RPM SPIN SPEED)	80 MIN
ENERGY CONSUMPTION kWh COTTON CUPBOARD DRY 50% MOISTURE (1400RPM SPINNING)	4,33 KWH
ENERGY CONSUMPTION kWh COTTON IRON DRY 50% MOISTURE (1400RPM SPINNING)	3,79 KWH
DRUM MATERIAL	HYBRID STAINLESS STEEL



**REINFORCED
STRUCTURE**



**2 YEARS
WARRANTY**



**5000
CYCLES**

/ COMMERCIAL WASHING

/ ATLANTIS RANGE – 15 KG

New aesthetics combined with an improvement in consumption make this **New ATLANTIS RANGE** an efficient solution for small businesses in delivering reliable and top quality laundry results.

/ **New Aesthetics**

/ **New Smart agitator**

/ **Higher loading capacity (15kg)**

/ **Reduced water consumption**



ASTHETICS & MAIN PARAMETERS

12NC	853797365000	12NC	853797765000
COMMERCIAL CODE	3LWTW4815FW	COMMERCIAL CODE	3LWED4830FW
CAPACITY (KG)	15 KG	CAPACITY (KG)	15 KG
CONTROL PANEL	E/M 3 KNOBS	CONTROL PANEL	E/M 2 KNOBS
DRUM VOLUME (L)	99 L	DRUM VOLUME (L)	198 L
MAX SPIN SPEED (RPM)	660 RPM	DRY SYSTEM	AUTO DRY
FAB. SOF.DISP	YES (IN AGITATOR)		

CYCLES & OPTIONS

NUMBER OF CYCLES	12	NUMBER OF CYCLES	13
NUMBER OF OPTIONS	13	NUMBER OF OPTIONS	4
WATER LEVELS (Automatic)	AUTO SENSOR	TEMPERATURES	4
WATER TEMPS	4	HEATER ELEMENT	3000 W
ELECTRICAL (IEC)	220-240 V / 50 HZ		

DIMENSIONS & WEIGHTS

NET WEIGHT (KG)	54,5 KG	NET WEIGHT (KG)	49,5 KG
DIMENSIONS HxWxD (CM)	106,7 x 69,9 x 68,6 CM	DIMENSIONS HxWxD (CM)	111,8 x 73,7 x 71,7 CM



/ COMMERCIAL WASHING

/ Commercial – 12 KG



PROFESSIONAL CYCLES

A cluster of new cycles specially studied to satisfy the professional needs. Mops & Towels additional to Working clothes.



LARGE DRUM – 101 L

Increased drum volume for easy load of big items. Drum also tilted for ease of use.



ASTHETICS & MAIN PARAMETERS

12NC	851700901000
COMMERCIAL CODE	AWG1212/PRO
CAPACITY (KG)	12 Kg
MAX SPIN SPEED (RPM)	1200 rpm
CONTROL PANEL	Digit
DRUM VOLUME (L)	101 L
KIND OF MOTOR	BPM (Brushless)
BELLOW	Silicone
TYPE OF WATER PROTECTION SYSTEM	Full Aquastop

CYCLES & OPTIONS

NUMBER OF CYCLES	9
NUMBER OF OPTIONS	

DIMENSIONS & WEIGHTS

NET WEIGHT (KG)	87 KG
DIMENSIONS HxWxD (CM)	101 x 81,3 x 68,6CM

TECHNICAL DATA

VOLTAGE (V)	220-240 V
ENERGY CONSUMPTION ANNUAL (kWh/YEAR)	
WATER CONSUMPTION ANNUAL (L/YEAR)	
NOISE LEVEL SPINNING (dBA)	70 dBA
NOISE LEVEL WASHING (dBA)	58 dBA
DRUM MATERIAL	Stainless Steel



REINFORCED
STRUCTURE



2 YEARS
WARRANTY



5000
CYCLES

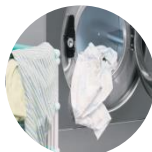
/ INDUSTRIAL WASHING

/ Industrial – 11 KG



STURDINESS & RELIABILITY

The frontal and top panels and the whole drum are made in stainless steel. AISI 304. The power balance system is the exclusive shock absorber system studied to bear high stress, maintaining the stability of the washing machine even in the most critical situation.



GARMENTS CARE

Thanks to the inverter motor the drum speed can be controlled so that there is a gradual acceleration of the spin to avoid mechanical stress to the linen fabrics.



SAFETY & ERGONOMICS

Emergency stop button, Motorized door lock, Automatic door opening are some of the features standard on the machine.



ASTHETICS & MAIN PARAMETERS

12NC	853202101000
COMMERCIAL CODE	ALA 021
CAPACITY (KG)	8 Kg
MAX SPIN SPEED (RPM)	1000 rpm
CONTROL PANEL	Computer controlled, LCD Touch
DRUM SIZE	36cm (depth), 53,5cm (Diameter)
G FACTOR	300
HEATINGTYPE	Electric
DRAINING SYSTEM	Valve (Pump optional)

CYCLES & OPTIONS

NUMBER OF CYCLES	200 (Programmable, USB)
COIN-Token	Optional

DIMENSIONS & WEIGHTS

NET WEIGHT (KG)	254 KG
DIMENSIONS HxWxD (CM)	103,9 x 72 x 85,3 CM

TECHNICAL DATA

VOLTAGE (V)	400 V
ELECTRICAL CONNECTION RATING (kW)	7,5
WATER CONSUMPTION	121
DRUM MATERIAL	Stainless Steel

200

PROGRAMS
(customized)

1

LCD
TOUCH

/ INDUSTRIAL WASHING

/ Industrial – 11 KG



STURDINESS & RELIABILITY

The frontal and top panels and the whole drum are made in stainless steel. AISI 304. The power balance system is the exclusive shock absorber system studied to bear high stress, maintaining the stability of the washing machine even in the most critical situation.



GARMENTS CARE

Thanks to the inverter motor the drum speed can be controlled so that there is a gradual acceleration of the spin to avoid mechanical stress to the linen fabrics.



SAFETY & ERGONOMICS

Emergency stop button, Motorized door lock, Automatic door opening are some of the features standard on the machine.



ASTHETICS & MAIN PARAMETERS

12NC	853202401000
COMMERCIAL CODE	ALA 024
CAPACITY (KG)	11 Kg
MAX SPIN SPEED (RPM)	1000 rpm
CONTROL PANEL	Computer controlled, LCD Touch
DRUM SIZE	47cm (depth), 53,5cm (Diameter)
G FACTOR	300
HEATINGTYPE	Electric
DRAINING SYSTEM	Valve (Pump optional)

CYCLES & OPTIONS

NUMBER OF CYCLES	200 (Programmable, USB)
COIN-Token	Optional

DIMENSIONS & WEIGHTS

NET WEIGHT (KG)	264 KG
DIMENSIONS HxWxD (CM)	103,9 x 72 x 95,8 CM

TECHNICAL DATA

VOLTAGE (V)	400 V
ELECTRICAL CONNECTION RATING (kW)	10,5
WATER CONSUMPTION	169
DRUM MATERIAL	Stainless Steel

200

PROGRAMS
(customized)

1

LCD
TOUCH

/ INDUSTRIAL WASHING

/ Industrial – 14 KG



STURDINESS & RELIABILITY

The frontal and top panels and the whole drum are made in stainless steel. AISI 304. The power balance system is the exclusive shock absorber system studied to bear high stress, maintaining the stability of the washing machine even in the most critical situation.



GARMENTS CARE

Thanks to the inverter motor the drum speed can be controlled so that there is a gradual acceleration of the spin to avoid mechanical stress to the linen fabrics.



SAFETY & ERGONOMICS

Emergency stop button, Motorized door lock, Automatic door opening are some of the features standard on the machine.



ASTHETICS & MAIN PARAMETERS

12NC	853202501000
COMMERCIAL CODE	ALA 025
CAPACITY (KG)	14 Kg
MAX SPIN SPEED (RPM)	900 rpm
CONTROL PANEL	Computer controlled, LCD Touch
DRUM SIZE	36,5cm (depth), 70cm (Diameter)
G FACTOR	316
HEATINGTYPE	Electric
DRAINING SYSTEM	Valve (Pump optional)

CYCLES & OPTIONS

NUMBER OF CYCLES	200 (Programmable, USB)
COIN-Token	Optional

DIMENSIONS & WEIGHTS

NET WEIGHT (KG)	390 KG
DIMENSIONS HxWxD (CM)	134,4 x 88 x 93,4 CM

TECHNICAL DATA

VOLTAGE (V)	400 V
ELECTRICAL CONNECTION RATING (kW)	11
WATER CONSUMPTION	234
DRUM MATERIAL	Stainless Steel

200

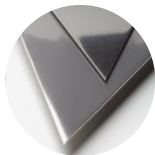
PROGRAMS
(customized)

1

LCD
TOUCH

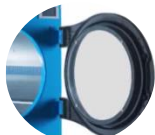
/ INDUSTRIAL DRYING

/ Industrial – 10 KG



STURDINESS & RELIABILITY

The frontal and top panels and the whole drum are made in stainless steel. The new transmissions ensure higher efficiency and reliability while guaranteeing less vibration and noise. The new filter is reinforced and it guarantees +40% of filtering power.



SAFETY & ERGONOMICS

The door width, its position and its opening at 180° make the loading and unloading much easier. The dryer is available also with left opening.



EXCELLENT DRYING RESULTS

Humidity control programs stop automatically when the residual level set is reached. This allows timesaving and avoid damages to fabrics due to wrong setting up by the operator.



ASTHETICS & MAIN PARAMETERS

12NC	853200701000
COMMERCIAL CODE	ALA 007
CAPACITY (KG)	10 KG
CONTROL PANEL	Microprocessor, LCD Touch
DRUM SIZE	42cm (depth), 75,6cm (Diameter)
TECHNOLOGY	Airvented, Exhaust External
G FACTOR	38

CYCLES & OPTIONS

NUMBER OF PROGRAMS	30
COIN-Token	Optional

DIMENSIONS & WEIGHTS

NET WEIGHT (KG)	214 KG
DIMENSIONS HxWxD (CM)	161 x 79,1 x 70,7 CM

TECHNICAL DATA

VOLTAGE (V)	400 V
ELECTRICAL CONNECTION RATING (kW)	18,8
DRUM MATERIAL	STAINLESS STEEL

30

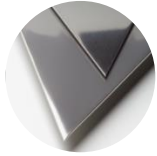
PROGRAMS
(customized)

1

LCD
TOUCH

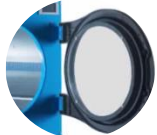
/ INDUSTRIAL DRYING

/ Industrial – 14 KG



STURDINESS & RELIABILITY

The frontal and top panels and the whole drum are made in stainless steel. The new transmissions ensure higher efficiency and reliability while guaranteeing less vibration and noise. The new filter is reinforced and it guarantees +40% of filtering power.



SAFETY & ERGONOMICS

The door width, its position and its opening at 180° make the loading and unloading much easier. The dryer is available also with left opening.



EXCELLENT DRYING RESULTS

Humidity control programs stop automatically when the residual level set is reached. This allows timesaving and avoid damages to fabrics due to wrong setting up by the operator.



ASTHETICS & MAIN PARAMETERS

12NC	853200801000
COMMERCIAL CODE	ALA 008
CAPACITY (KG)	14 KG
CONTROL PANEL	Microprocessor, LCD Touch
DRUM SIZE	58,5cm (depth), 75,6cm (Diameter)
TECHNOLOGY	Airvented, Exhaust External
G FACTOR	38

CYCLES & OPTIONS

NUMBER OF PROGRAMS	30
COIN-Token	Optional

DIMENSIONS & WEIGHTS

NET WEIGHT (KG)	226 KG
DIMENSIONS HxWxD (CM)	161 x 79,1 x 87,4 CM

TECHNICAL DATA

VOLTAGE (V)	400 V
ELECTRICAL CONNECTION RATING (kW)	18,8
DRUM MATERIAL	STAINLESS STEEL

30

PROGRAMS
(customized)

1

LCD
TOUCH



/ DISHWASHING

/ DISHWASHING

/ NEW DISHWASHING RANGE

High performance, sturdiness, reliability and low consumption are the key features of the **New DISHWASHING RANGE**

/ HIGH LINE

Innovative electronic control panel with large TFT color screen displaying temperatures, washing phases, cycles duration and anomalies that may occur.

/ STANDARD LINE

A user-friendly digit control panel allows to choose among 4 different cycles satisfying any professional need

/ ECO LINE

Ecoline are designed to be rugged and user-friendly. Intuitive, compact and efficient, combined with high performances

REASON TO BELIEVE

- / New professional platform
- / **Variety** of options
- / Molded wash tank, improved hygienic maintenance
- / **Stainless steel** body and rinsearms
- / **Quick** cycles
- / **Hi Energy** system
- / Tested & **Certified** by TÜV
- / In conformity with **Machinery Directive** 2006/42/ES

WARRANTY

/ **2 Years Spareparts Warranty** for Commercial use
(Warranty includes parts only)

TARGET CUSTOMERS

- / Conference facilities, Camping facilities
- / Snack bars, Pubs, Kiosks, Small restaurants, Bakeries
- / Facility managements, Cleaning companies, Office kitchens, Daycare and Kindergarten, School and Education institutes etc

PARTNER VALUE

- / Offer a perfectly suited product for commercial & professional usage, **increase trust** as a B2B partner.
- / **High profitability** vs Domestic products



2

YEARS SPARES
WARRANTY



TÜV
CERTIFIED

/ DISHWASHING

/ HIGH LINE RANGE



HIGH LINE WITH LCD CONTROL PANEL

Innovative electronic control panel with large TFT color screen displaying temperatures, washing phases, cycles duration and anomalies that may occur



HI ENERGY SYSTEM

The exclusive HI-ENERGY System ensures that the rinse cycle is carried out at an ideal and constant water pressure and temperature guaranteeing an energy saving



BUILT IN DETERGENT & RINSE AID DOSING

The machine automatically collects the right amount of both detergent and rinse aid for a perfect dosage and reduced manual operations



ASTHETICS & MAIN PARAMETERS

12NC	851299601180
COMMERCIAL CODE	HDL 534 SA
TYPE	HIGHLINE DISHWASHER
DISPLAY	LCD
BASKET SIZE (CM)	50 X 50
WASH HEIGHT (CM)	32
POWER (KW)	6,55
VOLTAGE	400V/3+N/50HZ
WATER SUPPLY TEMP	MAX 30 °C

CYCLES & OPTIONS

WASH CYCLE (Sec.)	60/120/180/480/BEER 130
BUILT -IN RINSE AID DOSING	YES
DETERGENT DOSING	YES
HY-HRG	YES
STAINLESS STEEL RINSING ARM	YES
UPPER WASHING ARM	YES
AUTOMATIC DRAIN	YES
AUTOMATIC SOFTENER	YES
DRAIN PUMP	-

DIMENSIONS

DIMENSIONS HXWXD (CM)	85,5 X 60 X 63,5 CM
-----------------------	---------------------

2

YEARS SPARES
WARRANTY



TÜV
CERTIFIED

/ DISHWASHING

/ STANDARD LINE RANGE



STANDARD LINE WITH DIGIT CONTROL

A user-friendly digit control panel allows you to choose from 4 different cycles satisfying all professional needs



HI ENERGY SYSTEM

The exclusive HI-ENERGY System ensures that the rinse cycle is carried out at an ideal and constant water pressure and temperature guaranteeing an energy saving



UPPER WASHING ARMS

Stainless steel upper washing arm guarantees an enhanced cleaning performance both for washing and rinsing phase



ASTHETICS & MAIN PARAMETERS

12NC	851299601090
COMMERCIAL CODE	SDD 54 U
TYPE	STANDARD LINE
DISPLAY	DIGIT
BASKET SIZE (CM)	50 X 50
WASH HEIGHT (CM)	32
POWER (KW)	3,90
VOLTAGE	230V/1/50HZ
WATER SUPPLY TEMP	MAX 30°C

CYCLES & OPTIONS

WASH CYCLE (Sec.)	60/120/180/480
BUILT-IN RINSE AID DOSING	YES
DETERGENT DOSING	YES
HY-HRG	YES
STAINLESS STEEL RINSING ARM	YES
UPPER WASHING ARM	YES
AUTOMATIC DRAIN	-
AUTOMATIC SOFTENER	-
DRAIN PUMP	YES

DIMENSIONS

DIMENSIONS HXWXD (CM)	82,5 X 57 X 61 CM
-----------------------	-------------------

2

YEARS SPARES
WARRANTY



TÜV
CERTIFIED

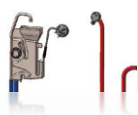
/ DISHWASHING

/ STANDARD LINE RANGE



STANDARD LINE WITH DIGIT CONTROL

A user-friendly digit control panel allows you to choose from 4 different cycles satisfying all professional needs



HI ENERGY SYSTEM

The exclusive HI-ENERGY System ensures that the rinse cycle is carried out at an ideal and constant water pressure and temperature guaranteeing an energy saving



UPPER WASHING ARMS

Stainless steel upper washing arm guarantees an enhanced cleaning performance both for washing and rinsing phase



ASTHETICS & MAIN PARAMETERS

12NC	851299601110
COMMERCIAL CODE	SDD 54 US
TYPE	STANDARD LINE
DISPLAY	DIGIT
BASKET SIZE (CM)	50 X 50
WASH HEIGHT (CM)	32
POWER (KW)	3,90
VOLTAGE	230V/1/50HZ
WATER SUPPLY TEMP	MAX 30°C

CYCLES & OPTIONS

WASH CYCLE (Sec.)	60/120/180/480
BUILT-IN RINSE AID DOSING	YES
DETERGENT DOSING	YES
HY-HRG	YES
STAINLESS STEEL RINSING ARM	YES
UPPER WASHING ARM	YES
AUTOMATIC DRAIN	-
AUTOMATIC SOFTENER	YES
DRAIN PUMP	YES

DIMENSIONS

DIMENSIONS HXWXD (CM)	82,5 X 57 X 61 CM
-----------------------	-------------------

2

YEARS SPARES
WARRANTY



TÜV
CERTIFIED

/ DISHWASHING

/ ECO LINE RANGE



ECOLINE DISH WASHER

Ecoline dishwashers are designed to be rugged and user-friendly. Intuitive, compact and efficient, combined with high performances



BUILT IN RINSE AID DOSING

The machine automatically collects the right amount of rinse aid at the end of the cycle for a perfect dosage



UPPER WASHING ARMS

The upper washing arm guarantees an enhanced cleaning performance



ASTHETICS & MAIN PARAMETERS

12NC	851299601050
COMMERCIAL CODE	EDM 53 DU
TYPE	ECO LINE
DISPLAY	MECHANICAL
BASKET SIZE (CM)	50 X 50
WASH HEIGHT (CM)	32
POWER (KW)	4,90
VOLTAGE	400V/3+N/50HZ
WATER SUPPLY TEMP	MIN. 45°C – MAX 55°C

CYCLES & OPTIONS

WASH CYCLE (Sec.)	120
BUILT-IN RINSE AID DOSING	YES
DETERGENT DOSING	-
HY-HRG	-
STAINLESS STEEL RINSING ARM	-
UPPER WASHING ARM	YES
AUTOMATIC DRAIN	-
AUTOMATIC SOFTENER	-
DRAIN PUMP	YES

DIMENSIONS

DIMENSIONS HXWXD (CM)	82,5 X 56,5 X 61 CM
-----------------------	---------------------

2

YEARS SPARES
WARRANTY



TÜV
CERTIFIED

/ DISHWASHING

/ ECO LINE RANGE



ECOLINE DISH WASHER

Ecoline dishwashers are designed to be rugged and user-friendly. Intuitive, compact and efficient, combined with high performances



BUILT IN RINSE AID DOSING

The machine automatically collects the right amount of rinse aid at the end of the cycle for a perfect dosage



UPPER WASHING ARMS

The upper washing arm guarantees an enhanced cleaning performance



ASTHETICS & MAIN PARAMETERS

12NC	851299601060
COMMERCIAL CODE	ECM 532 U
TYPE	ECO LINE HOOD
DISPLAY	MECHANICAL
BASKET SIZE (CM)	50 X 50
WASH HEIGHT (CM)	40,5
POWER (KW)	6,75
VOLTAGE	400V/3+N/50HZ
WATER SUPPLY TEMP	MIN. 45°C – MAX 55°C

CYCLES & OPTIONS

WASH CYCLE (Sec.)	120/180
BUILT-IN RINSE AID DOSING	YES
DETERGENT DOSING	-
HY-HRG	-
STAINLESS STEEL RINSING ARM	-
UPPER WASHING ARM	YES
AUTOMATIC DRAIN	-
AUTOMATIC SOFTENER	-
DRAIN PUMP	-

DIMENSIONS

DIMENSIONS HXWXD (CM)	191,5 X 77 X 148 CM
-----------------------	---------------------

2

YEARS SPARES WARRANTY



TÜV CERTIFIED



/ COOLING

/ COMMERCIAL COOLING

/ GLASS DOOR RANGE

/ Promotional shield with inner lighting with a **LED lamp**

/ **Hidden evaporator** at the back wall of the inner liner. The chamber interior is smooth and does not collect dirt, it's easy to clean

/ **Adjustable shelves** fixed with holders. Equipped with rollers and height adjustable support to correct installation and use

/ **Outside** control panel Thermometer.

/ Mechanical **door lock**



ASTHETICS & MAIN PARAMETERS

12NC	854422401000
COMMERCIAL CODE	ADN203 C
GROSS CAPACITY (L) / NET CAPACITY (L)	385 / 360 L
DOOR FRAME /COLOR	ALUMINUM
DOOR LOCK	YES
REVERSIBLE DOOR	YES
CONTROL PANEL LOCATION	OUTSIDE
THERMOMETER	NO
LIGHTNING	LED/CEILING
NUMBER/TYPES OF SHELVES	5 ADJUSTABLE WIRE SHELVES
SELF SIZE (CM)	49 X 38 CM

DIMENSIONS & WEIGHTS

DIMENSIONS HxWxD (CM)	205,5 X 60 X 60 CM
DEPTH OPENED DOORS (CM)	116 CM
NET WEIGHT (KG)	74 KG

TECHNICAL DATA

ENERGY CONSUMTION (LIGHT ON)	2,14
CLIMATE CLASS	3
EXTERNAL TEMP. RANGE (MIN/MAX) (°C)	+16 TO +32 °C
INSIDE TEMPERATURE CLASS	S
PRODUCT TEMP. RANGE (MIN/MAX) (°C)	-2 TO +14 °C
NOISE LEVEL (dBA)	50 DBA
REFRIGERANT GAS TYPE	R600A



/ COMMERCIAL COOLING

/ GLASS DOOR RANGE

/ **Promotional shield with inner lighting** with a fluorescent lamp.

/ **Hidden evaporator** at the back wall of the inner liner. The chamber interior is smooth and does not collect dirt, it's easy to clean

/ **Adjustable shelves** fixed with holders. Equipped with rollers and height adjustable support to correct installation and use

/ **Inside** control panel

/ **Mechanical door lock**



ASTHETICS & MAIN PARAMETERS

12NC	854422201000
COMMERCIAL CODE	ADN221C
GROSS CAPACITY (L) / NET CAPACITY (L)	480 / 455 L
DOOR FRAME /COLOR	ALUMINUM
DOOR LOCK	YES
REVERSIBLE DOOR	YES
CONTROL PANEL LOCATION	INSIDE
THERMOMETER	YES
LIGHTNING	FLUORESCENT/VERTICAL
NUMBER/TYPES OF SHELVES	5 ADJUSTABLE WIRE SHELVES
SELF SIZE (CM)	49 X 48,7 CM

DIMENSIONS & WEIGHTS

DIMENSIONS HxWxD (CM)	202,5 X 60 X 68,5 CM
DEPTH OPENED DOORS (CM)	125 CM
NET WEIGHT (KG)	90 KG

TECHNICAL DATA

ENERGY CONSUMTION (LIGHT ON)	3,4
CLIMATE CLASS	3
EXTERNAL TEMP. RANGE (MIN/MAX) (°C)	+16 TO +32 °C
INSIDE TEMPERATURE CLASS	S
PRODUCT TEMP. RANGE (MIN/MAX) (°C)	+2 TO +14 °C
NOISE LEVEL (dBA)	60 DBA
REFRIGERANT GAS TYPE	R600A

2

YEARS WARRANTY

/ COMMERCIAL COOLING

/ GLASS DOOR RANGE

/ Lighting with a **LED lamp**

/ **Hidden evaporator** at the back wall of the inner liner. The chamber interior is smooth and does not collect dirt, it's easy to clean

/ **Adjustable shelves** fixed with holders. Equipped with rollers and height adjustable support to correct installation and use

/ **Outside** control panel Thermometer.

/ Mechanical **door lock**



ASTHETICS & MAIN PARAMETERS

12NC	854420301020
COMMERCIAL CODE	ADN203/2
GROSS CAPACITY (L) / NET CAPACITY (L)	350 / 320 L
DOOR FRAME /COLOR	PVC/WHITE
DOOR LOCK	YES
REVERSIBLE DOOR	NO
CONTROL PANEL LOCATION	OUTSIDE
THERMOMETER	YES
LIGHTNING	LED/CEILING
NUMBER/TYPES OF SHELVES	6 ADJUSTABLE WIRE SHELVES
SELF SIZE (CM)	52,3 X 35,1 CM

DIMENSIONS & WEIGHTS

DIMENSIONS HxWxD (CM)	173 X 60 X 60 CM
DEPTH OPENED DOORS (CM)	116 CM
NET WEIGHT (KG)	65 KG

TECHNICAL DATA

ENERGY CONSUMTION (LIGHT ON)	2,14
CLIMATE CLASS	3
EXTERNAL TEMP. RANGE (MIN/MAX) (°C)	+16 TO +32 °C
INSIDE TEMPERATURE CLASS	S
PRODUCT TEMP. RANGE (MIN/MAX) (°C)	-2 TO +14 °C
NOISE LEVEL (dBA)	43 DBA
REFRIGERANT GAS TYPE	R600A

2

YEARS WARRANTY

/ COMMERCIAL COOLING

/ GLASS DOOR RANGE

/ Lighting with a **LED lamp**

/ **Hidden evaporator** at the back wall of the inner liner. The chamber interior is smooth and does not collect dirt, it's easy to clean

/ **Adjustable shelves** fixed with holders. Equipped with rollers and height adjustable support to correct installation and use

/ **Outside** control panel Thermometer.

/ Mechanical **door lock**



ASTHETICS & MAIN PARAMETERS

12NC	854420201020
COMMERCIAL CODE	ADN202/2
GROSS CAPACITY (L) / NET CAPACITY (L)	290 / 275 L
DOOR FRAME /COLOR	ALUMINUM/WHITE
DOOR LOCK	YES
REVERSIBLE DOOR	NO
CONTROL PANEL LOCATION	OUTSIDE
THERMOMETER	YES
LIGHTNING	LED/CEILING
NUMBER/TYPES OF SHELVES	6 ADJUSTABLE WIRE SHELVES
SELF SIZE (CM)	52 X 36,5 CM

DIMENSIONS & WEIGHTS

DIMENSIONS HxWxD (CM)	145 X 60 X 60 CM
DEPTH OPENED DOORS (CM)	116 CM
NET WEIGHT (KG)	55 KG

TECHNICAL DATA

ENERGY CONSUMTION (LIGHT ON)	2,05
CLIMATE CLASS	3
EXTERNAL TEMP. RANGE (MIN/MAX) (°C)	+16 TO +32 °C
INSIDE TEMPERATURE CLASS	S
PRODUCT TEMP. RANGE (MIN/MAX) (°C)	-2 TO +14 °C
NOISE LEVEL (dBA)	43 DBA
REFRIGERANT GAS TYPE	R600A

2

YEARS WARRANTY

/ COMMERCIAL COOLING

/ GLASS DOOR RANGE

/ **Hidden evaporator** at the back wall of the inner liner. The chamber interior is smooth and does not collect dirt, it's easy to clean

/ **Adjustable shelves** fixed with holders. Equipped with rollers and height adjustable support to correct installation and use

/ Mechanical **door lock**



ASTHETICS & MAIN PARAMETERS

12NC	854422701000
COMMERCIAL CODE	ADN140
GROSS CAPACITY (L) / NET CAPACITY (L)	130 / 127 L
DOOR FRAME /COLOR	ALUMINUM
DOOR LOCK	YES
REVERSIBLE DOOR	YES
CONTROL PANEL LOCATION	NO
THERMOMETER	NO
LIGHTNING	NO
NUMBER/TYPES OF SHELVES	3 ADJUSTABLE WIRE SHELVES
SELF SIZE (CM)	45,5 X 31,4 CM

DIMENSIONS & WEIGHTS

DIMENSIONS HxWxD (CM)	85 X 56 X 60 CM
DEPTH OPENED DOORS (CM)	111,5 CM
NET WEIGHT (KG)	32 KG

TECHNICAL DATA

ENERGY CONSUMTION (LIGHT OFF)	0,65
CLIMATE CLASS	3
EXTERNAL TEMP. RANGE (MIN/MAX) (°C)	+16 TO +32 °C
INSIDE TEMPERATURE CLASS	S
PRODUCT TEMP. RANGE (MIN/MAX) (°C)	+6 TO +14 °C
NOISE LEVEL (dBA)	38 DBA
REFRIGERANT GAS TYPE	R600A



/ COMMERCIAL COOLING

/ WINE COOLER RANGE

/ Wood shelves for wine from **natural oak**

/ **Glass of wine cooler is covered with a special film** which does not transmit ultraviolet rays that negatively impact on wine quality.

/ **Carbon filter** for ensuring adequate humidity and for absorbing smells from the refrigerator chamber.

/ Mechanical **door lock**



ASTHETICS & MAIN PARAMETERS

12NC	851299601140
COMMERCIAL CODE	ADN 231 BK
GROSS CAPACITY (L) / NET CAPACITY (L)	350 / 330 L
DOOR FRAME /COLOR	ALUMINUM/BROWN
DOOR LOCK	YES
REVERSIBLE DOOR	NO
CONTROL PANEL LOCATION	OUTSIDE
THERMOMETER	NO
LIGHTNING	LED/CEILING
NUMBER/TYPES OF SHELVES	9+1 WOODEN SHELVES (OAK)
SELF SIZE (CM)	51,8 X 36,1 CM

DIMENSIONS & WEIGHTS

DIMENSIONS HxWxD (CM)	173 X 60 X 60 CM
DEPTH OPENED DOORS (CM)	116 CM
NET WEIGHT (KG)	65 KG

TECHNICAL DATA

ENERGY CONSUMPTION (LIGHT OFF)	0,93
CLIMATE CLASS	N
EXTERNAL TEMP. RANGE (MIN/MAX) (°C)	+16 TO +32 °C
INSIDE TEMPERATURE CLASS	-
PRODUCT TEMP. RANGE (MIN/MAX) (°C)	+4 TO +14 °C
NOISE LEVEL (dBA)	43 dBA
REFRIGERANT GAS TYPE	R600A

2

YEARS WARRANTY

/ COMMERCIAL COOLING

/ ICEMAKER RANGE

/ The **Whirlpool professional range** of ice makers, from the wide choice of finger ice cube makers to the cost competitive smaller range of **squared ice cube** makers, comply with the most stringent European safety and **hygiene** regulations for the use in the most demanding **professional situations**.

/ The **Whirlpool Ice maker** are highly reliable and very **user-friendly**.

Our technology: the "hot wire" system. Cut with hot wires from a block to be perfect ice cubes. This "Hot Wire System" prevents the formation of bubbles in the ice. The result is clear, square ice cubes.



AGB 024



AGB 022

ASTHETICS & MAIN PARAMETERS

12NC	851202401070	851202201050
COMMERCIAL CODE	AGB 024	AGB 022
CAPACITY (KG/H)	40 KG / 24 H	24 KG / 24 H
STORAGE CAPACITY (KG)	20 KG	10 KG
NUMBERS OF ICE CUBES PER 24 HOURS	5600	3500
ICE CUBE SHAPE	CUBE	CUBE
ICE CUBE SIZE HxWxD (MM)	29X29X15	29X29X15
BODY MATERIAL	STAINLESS STEEL	STAINLESS STEEL
VENTILATION	AIR CONDENSER	AIR CONDENSER

DIMENSIONS & WEIGHTS

DIMENSIONS HxWxD (CM)	85 X 53,5 X 55,5 CM	59 X 53,5 X 55,5 CM
NET WEIGHT (KG)	45 KG	38 KG

TECHNICAL DATA

VOLTAGE	230V/50-60HZ	230V/50-60HZ
COMPRESSOR (GAS)	1/5 HERMETIC R134A)	1/5 HERMETIC R134A)
ENERGY CONSUMPTION / KG ICE (KWh)	0,19 KWH	0,26 KWH
WATERCONNECTION	3 / 4 "	3 / 4 "
WATERCONSUMPTION PER 24 HOURS (L)	120 L	72 L



/ PROFESSIONAL COOLING

/ PROFESSIONAL RANGE

AISI 304 Stainless Steel both internally and externally

- / Electronic control type
- / Digital display
- / Automatic defrost
- / Ventilated
- / Automatic water evaporation system
- / Adjustable plastic feet
- / Internal light (ADN 215)
- / Evaporator inside the cell
- / Stainless Steel grid supports



/ ADN 213 - Fridge

ASTHETICS & MAIN PARAMETERS

12NC	854421301000	854421501000
COMMERCIAL CODE	ADN213	ADN215
NET CAPACITY (L)	700 L	700 L
DOOR FRAME /COLOR	Stainless steel	Stainless steel / Glassdoor
DOOR LOCK	YES	YES
REVERSIBLE DOOR	YES	YES
CONTROL PANEL LOCATION	OUTSIDE	OUTSIDE
THERMOMETER	NO	NO
LIGHTNING	NO	YES
NUMBER/TYPES OF SHELVES	3 pcs - Plastic coated grids(GN 2/1)	3 pcs - Plastic coated grids(GN 2/1)

DIMENSIONS & WEIGHTS

DIMENSIONS HxWxD (CM)	205 X 72 X 86 CM	205 X 72 X 86 CM
NET WEIGHT (KG)	125 KG	135 KG

TECHNICAL DATA

TEMPERATURE CLASS	T up to 43°C	T up to 25°C
PRODUCT TEMP. RANGE (MIN/MAX) (°C)	-2 TO +8 °C	+1 TO +10 °C
REFRIGERANT GAS TYPE	R404a	R404a



/ ADN 215 - Fridge

/ PROFESSIONAL COOLING

/ PROFESSIONAL RANGE

AISI 304 Stainless Steel both internally and externally

- / Electronic control type
- / Digital display
- / Automatic defrost
- / Ventilated
- / Automatic water evaporation system
- / Adjustable plastic feet
- / Internal light (ADN 215)
- / Evaporator inside the cell
- / Stainless Steel grid supports



/ ADN 214 - Freezer

ASTHETICS & MAIN PARAMETERS

12NC	854421401000	854421601000
COMMERCIAL CODE	ADN214	ADN216
NET CAPACITY (L)	700 L	350 + 350 L
DOOR FRAME /COLOR	Stainless steel	Stainless steel
DOOR LOCK	YES	YES
REVERSIBLE DOOR	YES	YES
CONTROL PANEL LOCATION	OUTSIDE	OUTSIDE
THERMOMETER	NO	NO
LIGHTNING	NO	NO
NUMBER/TYPES OF SHELVES	3 pcs - Plastic coated grids(GN 2/1)	4 pcs - Plastic coated grids(GN 2/1)

DIMENSIONS & WEIGHTS

DIMENSIONS HxWxD (CM)	205 X 72 X 86 CM	205 X 72 X 86 CM
NET WEIGHT (KG)	130 KG	175 KG

TECHNICAL DATA

TEMPERATURE CLASS	T up to 43°C	T up to 43°C
PRODUCT TEMP. RANGE (MIN/MAX) (°C)	-18 TO -20 °C	+1 TO +8 °C -18 TO -20 °C
REFRIGERANT GAS TYPE	R404a	R404a



/ ADN 216 - Combi



/ COOKING

/ COMMERCIAL COOKING

/ FREESTANDING MICROWAVE

/ Full case and oven cavity in stainless steel.

Making it easy to clean.

/ **Large** 25 liters capacity without turntable.

/ 10 pre-programmed time settings.

Easy to program own time settings and power levels.

/ **Easy** plug ´n play



ASTHETICS & MAIN PARAMETERS

12NC	858762899790
COMMERCIAL CODE	PRO25IX
CAPACITY (L)	25 L
NOMINAL OUTPUT POWER (W)	1000 W
CASE MATERIAL	S/STEEL (SUS 430)
CAVITY MATERIAL	S/STEEL (SUS 430)
CLOCK FUNCTION	YES
DISPLAY / COLOR	LED/GREEN

PROGRAM & OPTIONS

NUMBER OF PROGRAMS	10
NUMBER OF POWER LEVELS	5
PAUSE	YES
PROGRAMMABLE PROGRAMS	YES

DIMENSIONS & WEIGHTS

NET WEIGHT (KG)	14,6 KG
DIMENSIONS HXWXD (CM)	31,1 X 51,1 X 43,1 CM
CAVITY DIMENSIONS HXWXD (CM)	20 X 32,7 X 34,6 CM

TECHNICAL DATA

VOLTAGE (V)	230 V / 50HZ
INPUT POWER (W)	1550 W
NO. MAGNETRON	1
POWER CORD LENGTH (M)	1,5 M

2

YEARS WARRANTY